

Statistiques 2018

(sur la base des données saisies et clarifiées entre le 8 mai 2018)

1) Développement

Année	Pays/secteur	N classes
2018	15/20 +1(données à tariter ensuite)	3 430 (3 509)
2017	16/20 (20 à vérifier)	4 242
2016	15/18	4 113
2015	11/16	3 098
2014	8/14	3 814
2013	7/8	2 786
2012	1/6	1 028

2) Pays/secteurs

Aix – Marseille

Alsace (CA – HA – NA) Alsace (Lycée PRO)

Bâle/Suisse alémanique (données à traiter ensuite) (Brésil absent) (Communauté Germanophone de Belgique absent)

Ecosse

Hongrie absent)

Italie (nation)

Liban

Madagascar

(Maroc absent)

Pologne (nation?)

Rheinland-Pfalz (seul)

Romanie

Strasbourg et Europe

Suisse Romande

Zone Ibérique

3) Participation





Pays/Secteur	Classes Seconde	Classes Troisième	Classes Jumelage
Aix – Marseille	133	157	34
Alsace (CA – HA – NA)	115	273	60
Alsace (Lycée PRO)	40		2
Bâle/Suisse alémanique (*)	33	46	
Ecosse	19	23	
Italie	502	669	
Liban	40	32	
Madagascar	8		
Pologne	322	236	
Rheinland-Pfalz	131	146	
Romanie	145	85	
Strasbourg et Europe	74	96	8
Suisse Romande	5	42	
Zone Ibérique	13	20	

(* données à traiter ensuite parce qu'ils sont parvenus le 8 mai)

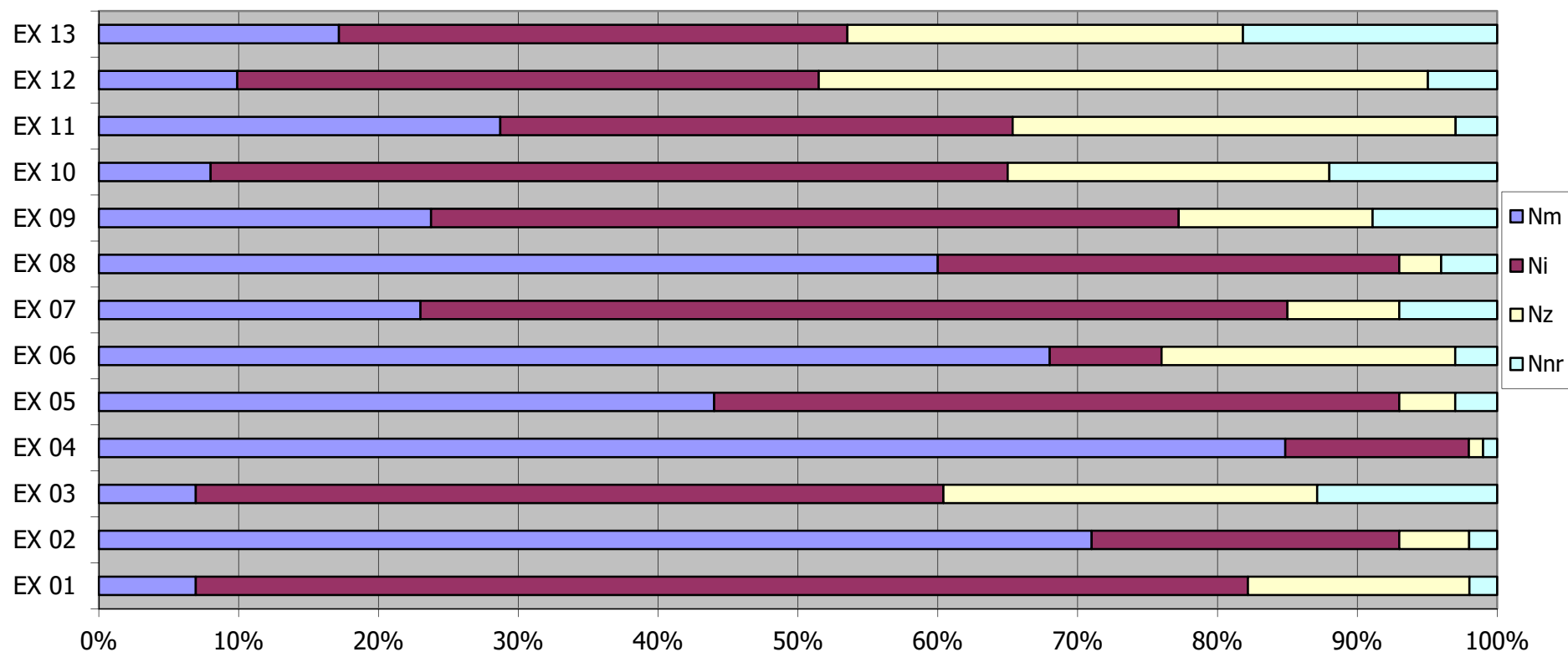
4) L'évaluation des résultats (selon les critères déjà utilisés – cette modalité *est tout à vérifier*)

valeur	P(%) M + int	P(%) M	P(%) zero	P(%) nr
très négative	< 30			
négative	$30 \leq P < 50$			
positive	$60 \leq P$	> 10	≤ 20	≤ 20
très positive	≥ 70	> 40	≤ 20	≤ 10

5) Les résultats

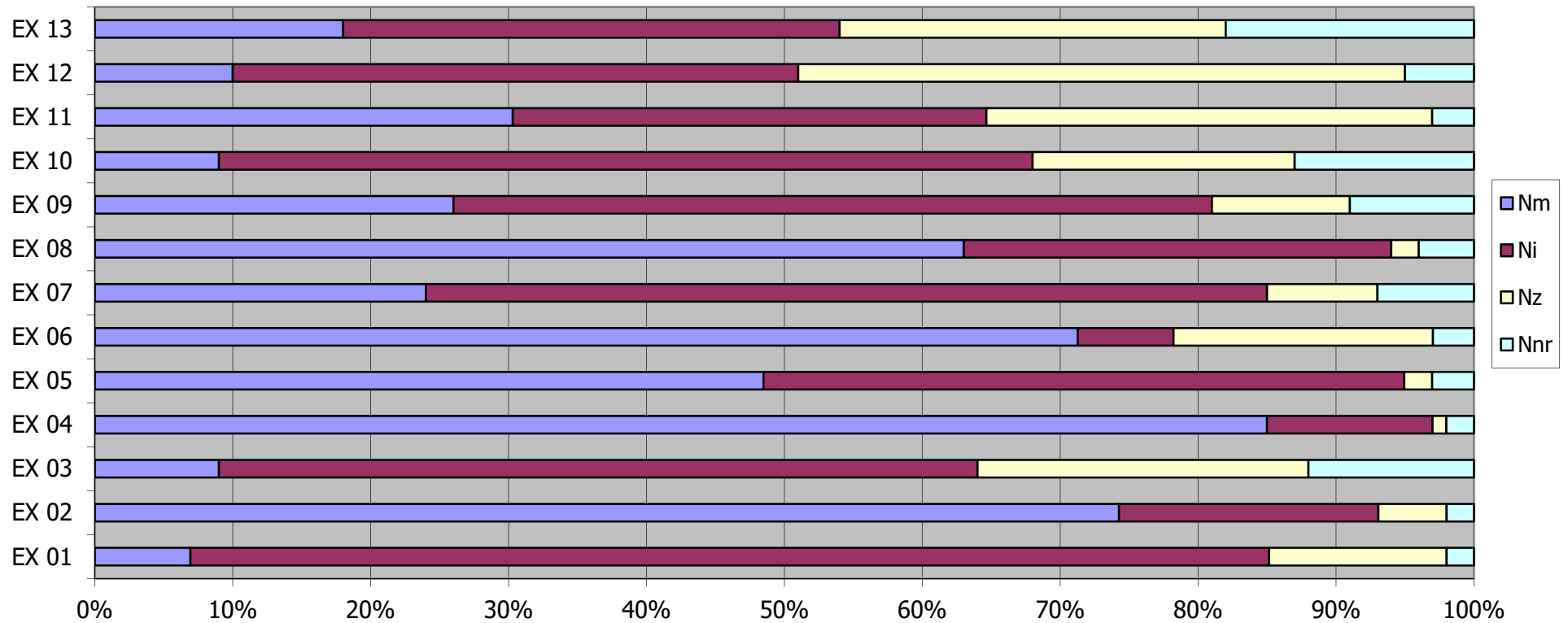
Emotion	3 ^e	2 ^{de}	T
 <p>Très négatifs et négatifs</p>	Aucun exercice	Aucun exercice	Aucun exercice
 <p>Incertains</p>	Ex n. 3 – 6 – 10 Le pire n.3	Ex n. 11-12 Le pire n.12	Ex n. 3 – 11-12 Le pire n.12
 <p>Positifs</p>	Ex n. 8	Ex n. 7-8-9-10	Ex n. 7-8-9
 <p>Très Positifs</p>	Ex n. 2 - 4 -5	Ex n. 2 - 4 – 5-6	Ex n. 2 – 4 -5

Les classes 3^e - 2^de - jumelage ensemble (sans PRO)



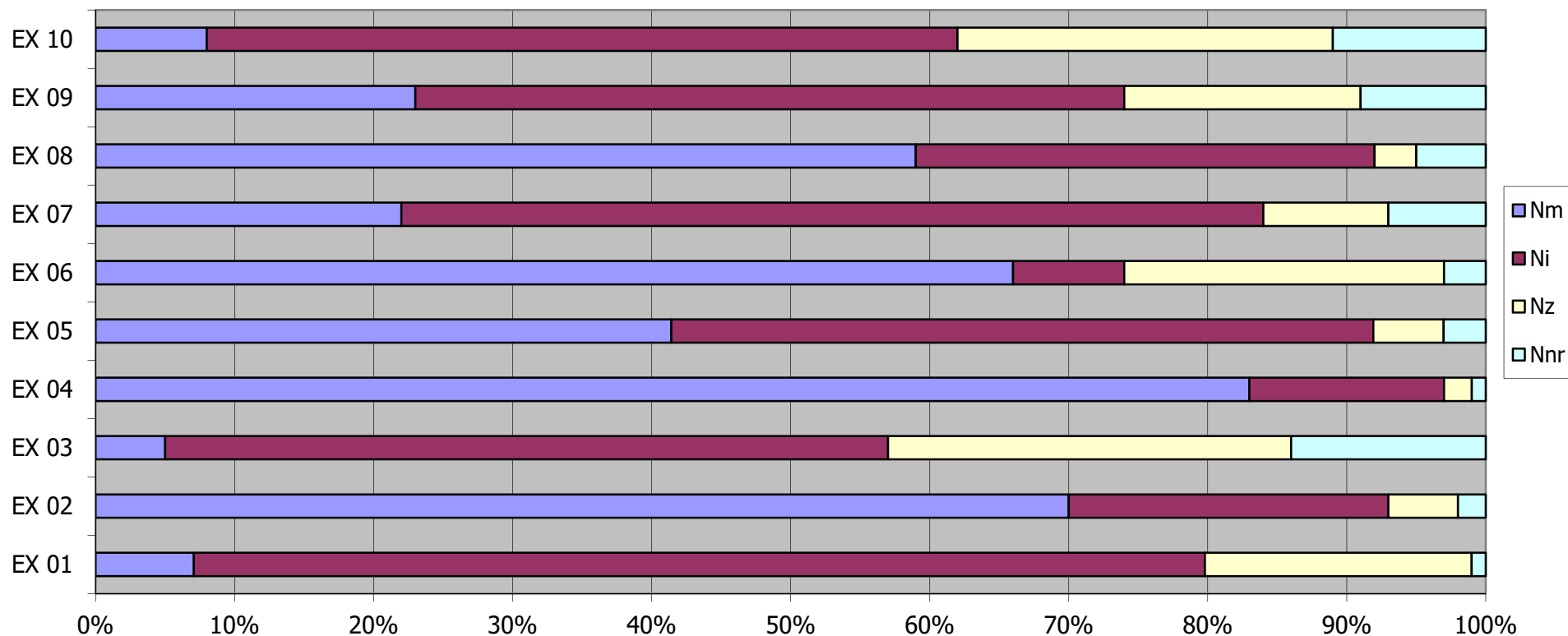
	EX 01	EX 02	EX 03	EX 04	EX 05	EX 06	EX 07	EX 08	EX 09	EX 10	EX 11	EX 12	EX 13
Nm	7%	71%	7%	84%	44%	68%	23%	60%	24%	8%	29%	10%	17%
Ni	76%	22%	54%	13%	49%	8%	62%	33%	54%	57%	37%	42%	36%
Nz	16%	5%	27%	1%	4%	21%	8%	3%	14%	23%	32%	44%	28%
Nnr	2%	2%	13%	1%	3%	3%	7%	4%	9%	12%	3%	5%	18%

Les classes 2^{de} (sans PRO)



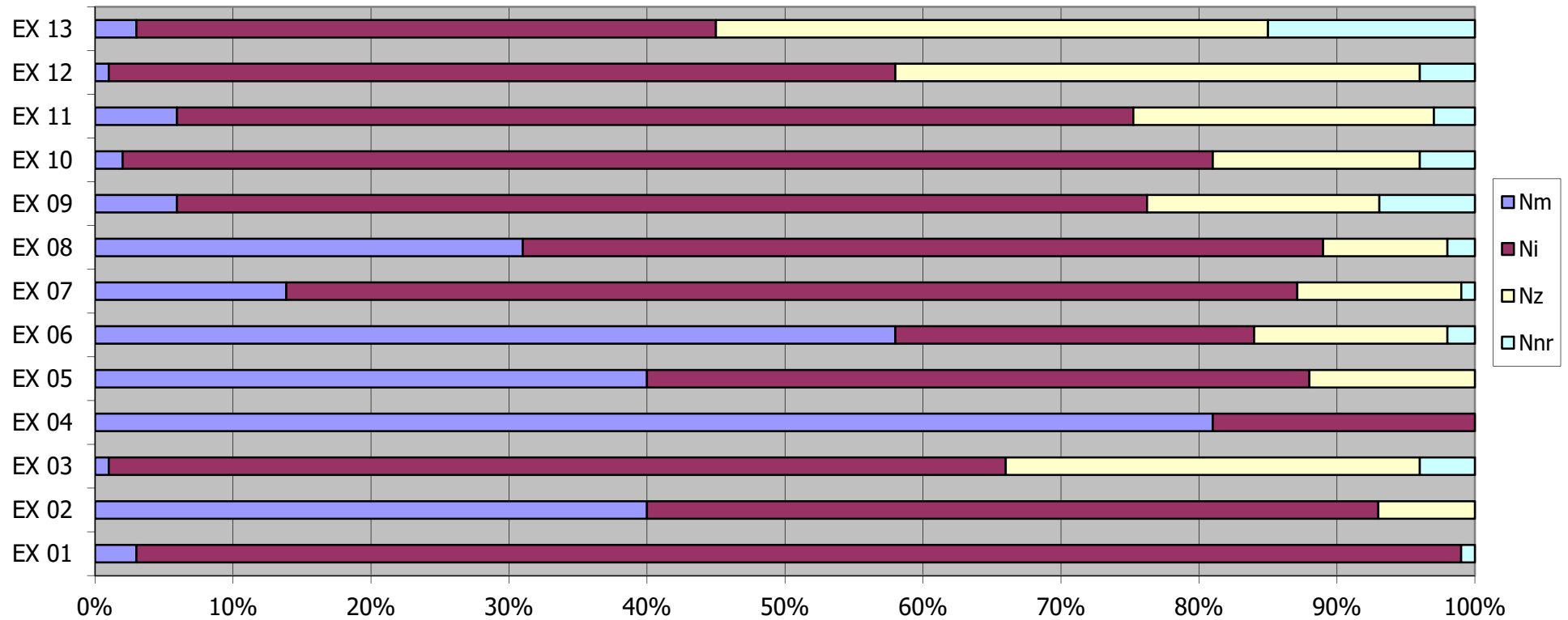
	EX 01	EX 02	EX 03	EX 04	EX 05	EX 06	EX 07	EX 08	EX 09	EX 10	EX 11	EX 12	EX 13
Nm	7%	75%	9%	85%	48%	72%	24%	63%	26%	9%	30%	10%	18%
Ni	79%	19%	55%	12%	46%	7%	61%	31%	55%	59%	34%	41%	36%
Nz	13%	5%	24%	1%	2%	19%	8%	2%	10%	19%	32%	44%	28%
Nnr	2%	2%	12%	2%	3%	3%	7%	4%	9%	13%	3%	5%	18%

Les classes 3^e



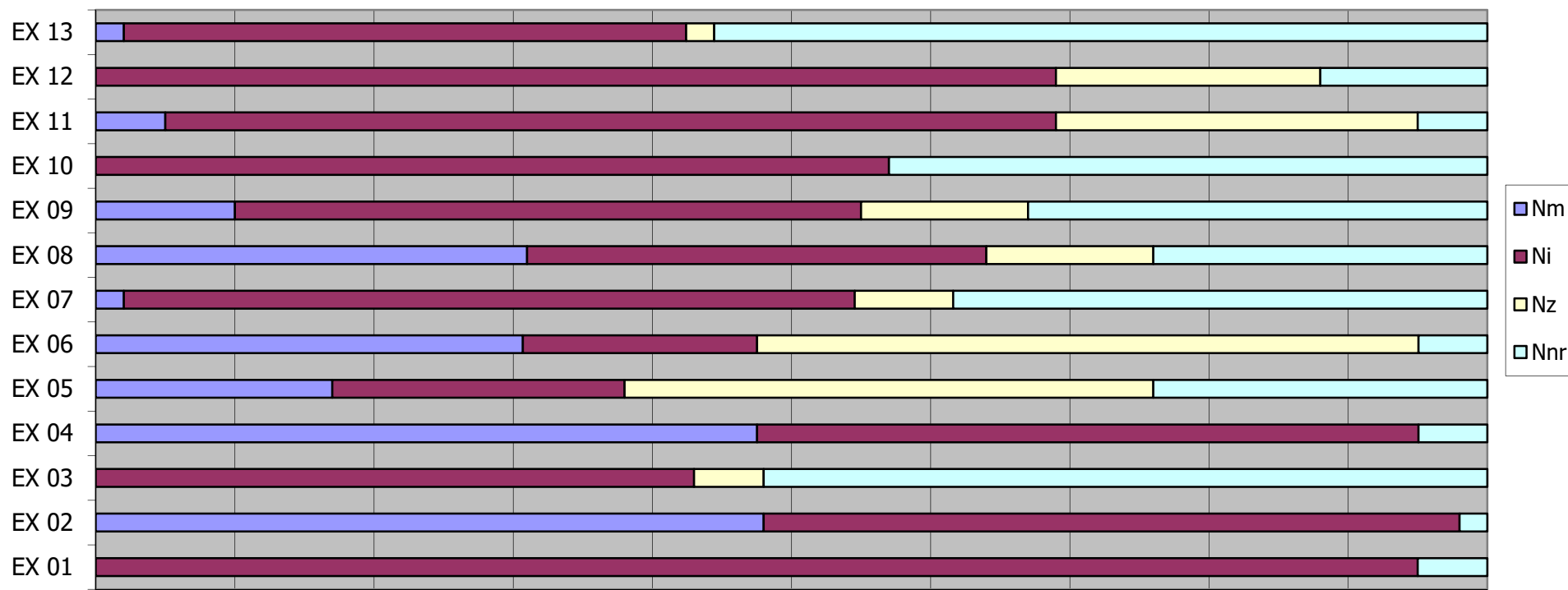
	EX 01	EX 02	EX 03	EX 04	EX 05	EX 06	EX 07	EX 08	EX 09	EX 10
Nm	7%	70%	5%	83%	41%	66%	22%	59%	23%	8%
Ni	72%	23%	52%	14%	50%	8%	62%	33%	51%	54%
Nz	19%	5%	29%	2%	5%	23%	9%	3%	17%	27%
Nnr	1%	2%	14%	1%	3%	3%	7%	5%	9%	11%

Les classes jumelage (sans PRO)



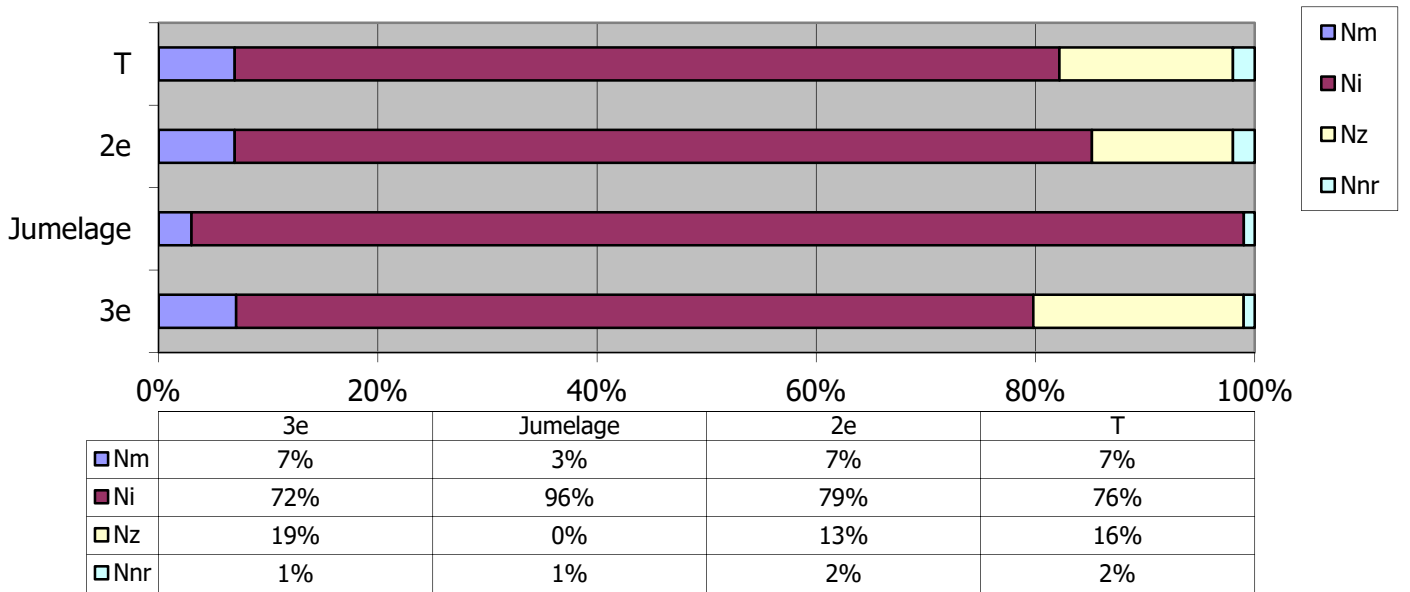
	EX 01	EX 02	EX 03	EX 04	EX 05	EX 06	EX 07	EX 08	EX 09	EX 10	EX 11	EX 12	EX 13
Nm	3%	40%	1%	81%	40%	58%	14%	31%	6%	2%	6%	1%	3%
Ni	96%	53%	65%	19%	48%	26%	74%	58%	71%	79%	70%	57%	42%
Nz	0%	7%	30%	0%	12%	14%	12%	9%	17%	15%	22%	38%	40%
Nnr	1%	0%	4%	0%	0%	2%	1%	2%	7%	4%	3%	4%	15%

Secteur des lycées professionnels alsaciens

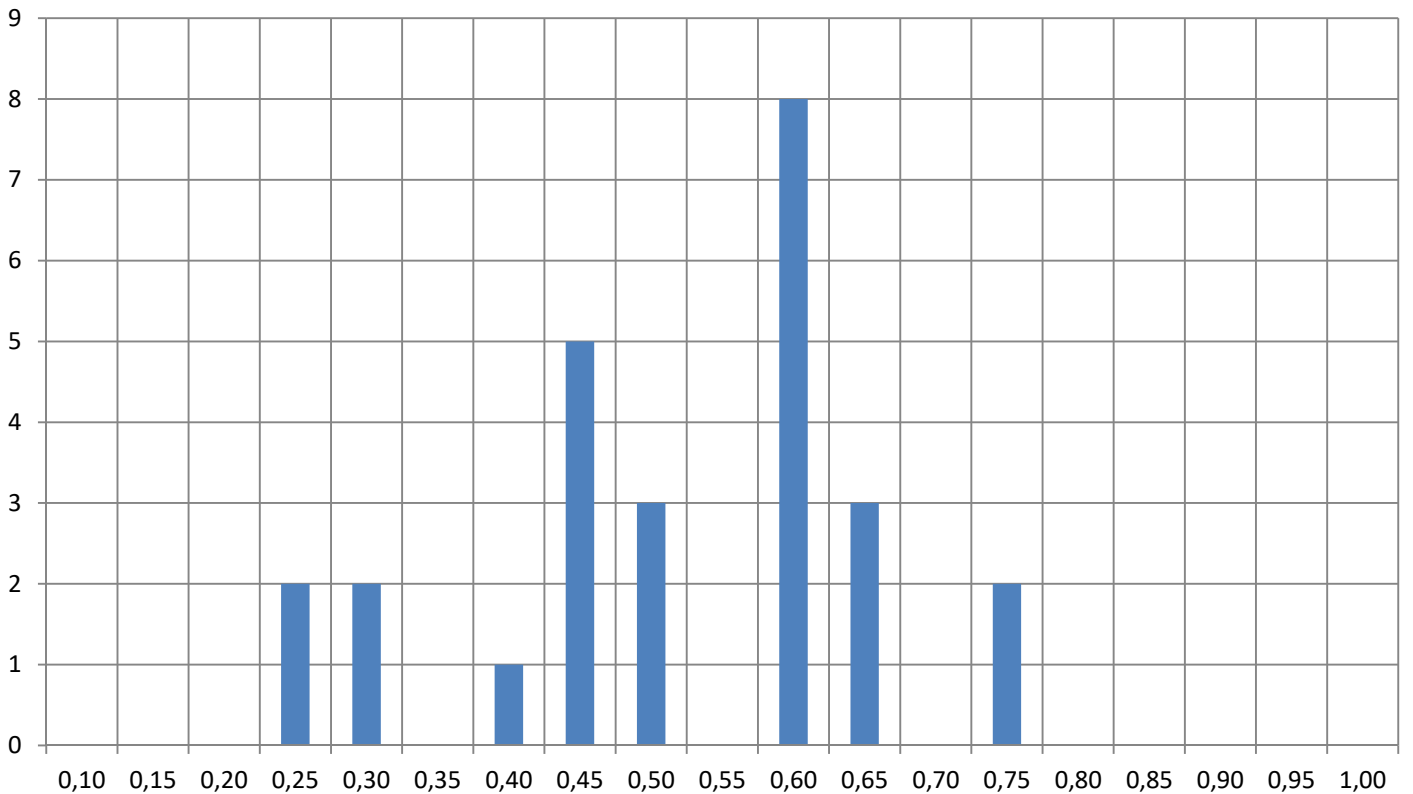


	0%	10%	20%	30%	40%	50%	60%	70%	80%	90%	100%		
	EX 01	EX 02	EX 03	EX 04	EX 05	EX 06	EX 07	EX 08	EX 09	EX 10	EX 11	EX 12	EX 13
Nm	0%	48%	0%	48%	17%	31%	2%	31%	10%	0%	5%	0%	2%
Ni	95%	50%	43%	48%	21%	17%	52%	33%	45%	57%	64%	69%	40%
Nz	0%	0%	5%	0%	38%	48%	7%	12%	12%	0%	26%	19%	2%
Nnr	5%	2%	52%	5%	24%	5%	38%	24%	33%	43%	5%	12%	55%

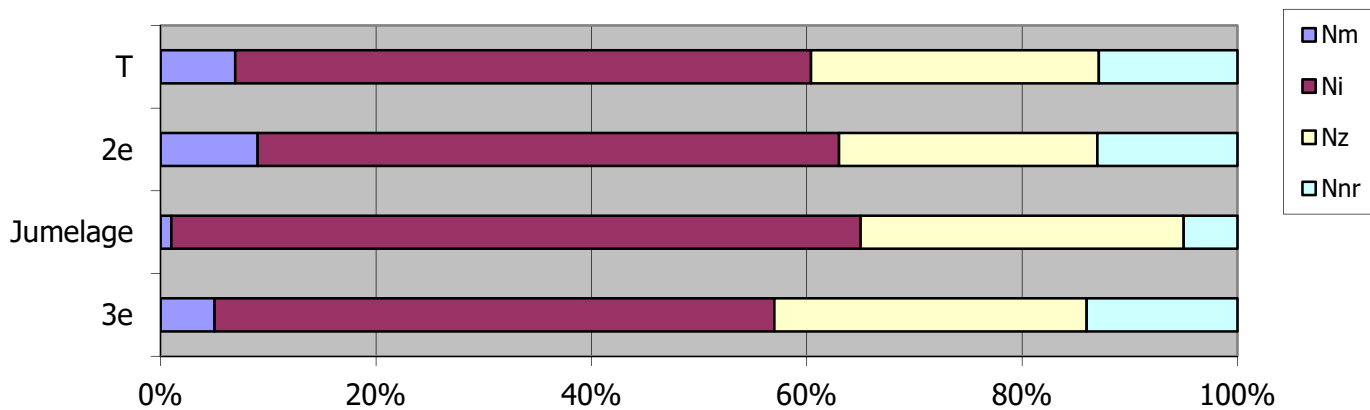
Exercice n. 1



EX 1 - Distribution des mo/M - toute population

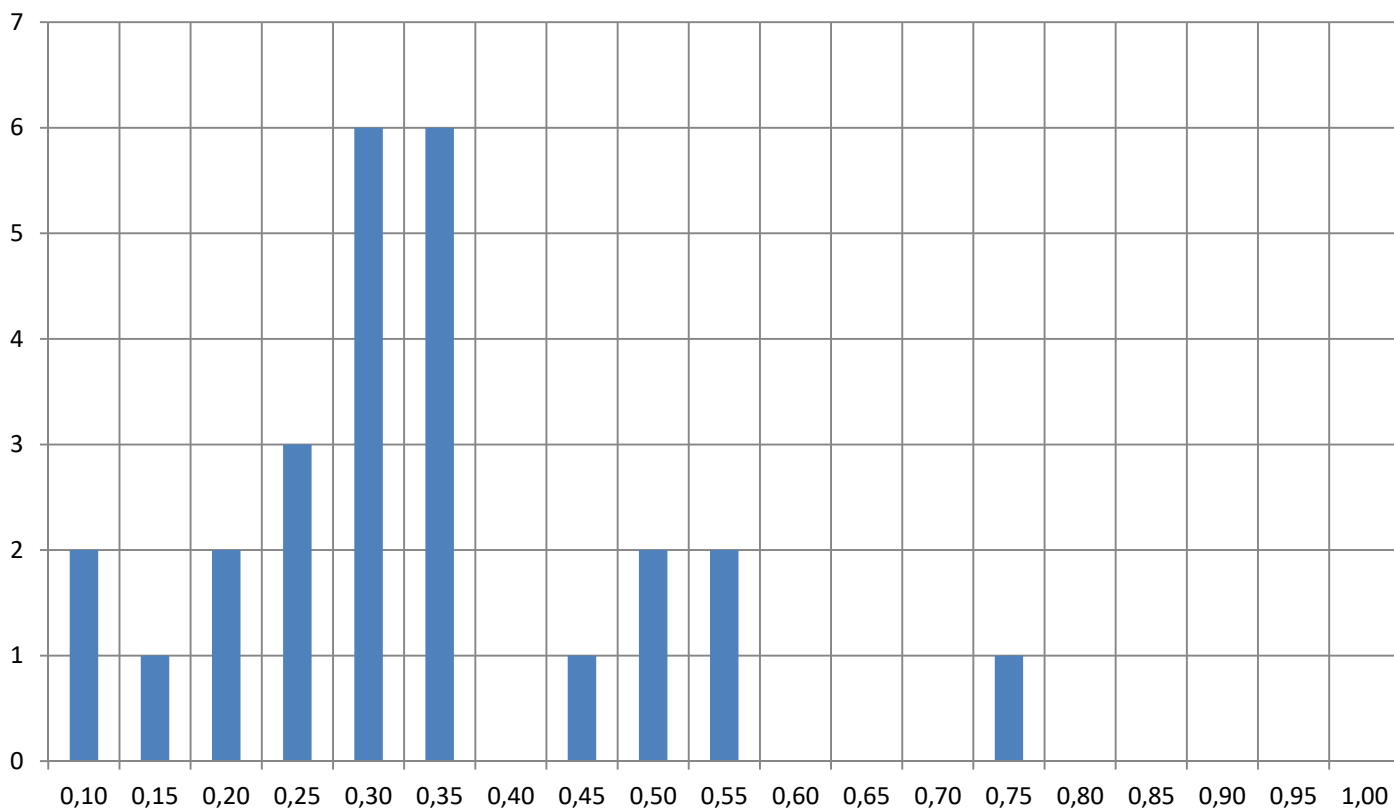


Exercice n. 3

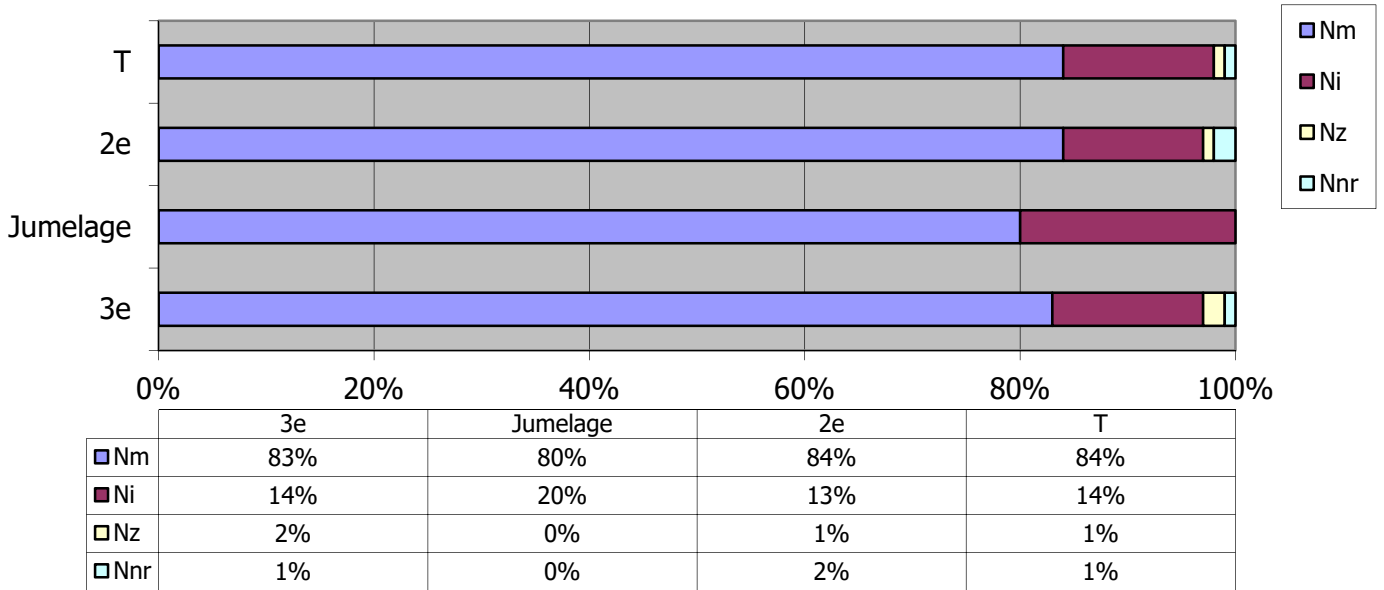


	3e	Jumelage	2e	T
Nm	5%	1%	9%	7%
Ni	52%	64%	54%	54%
Nz	29%	30%	24%	27%
Nnr	14%	5%	13%	13%

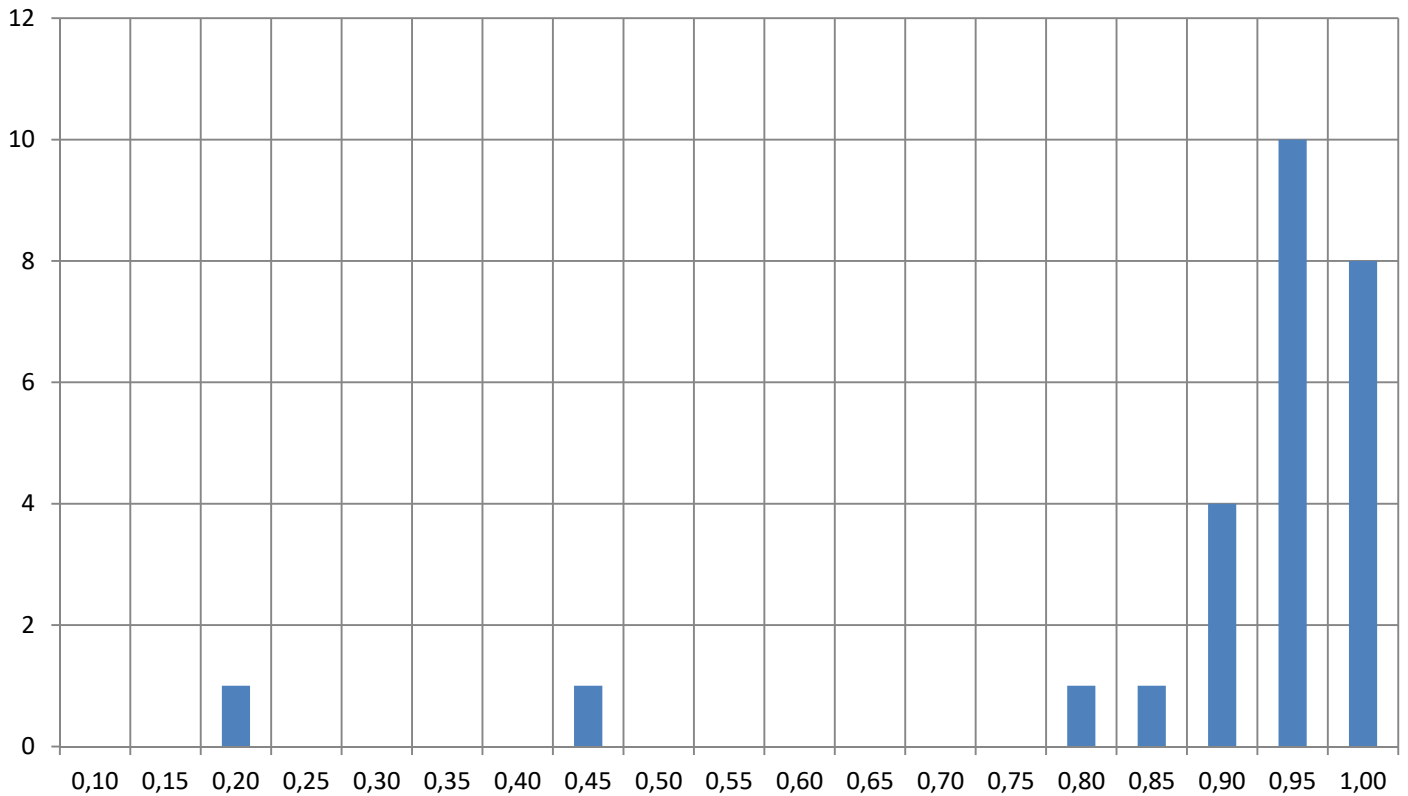
EX 3 - Distribution des mo/M - toute population



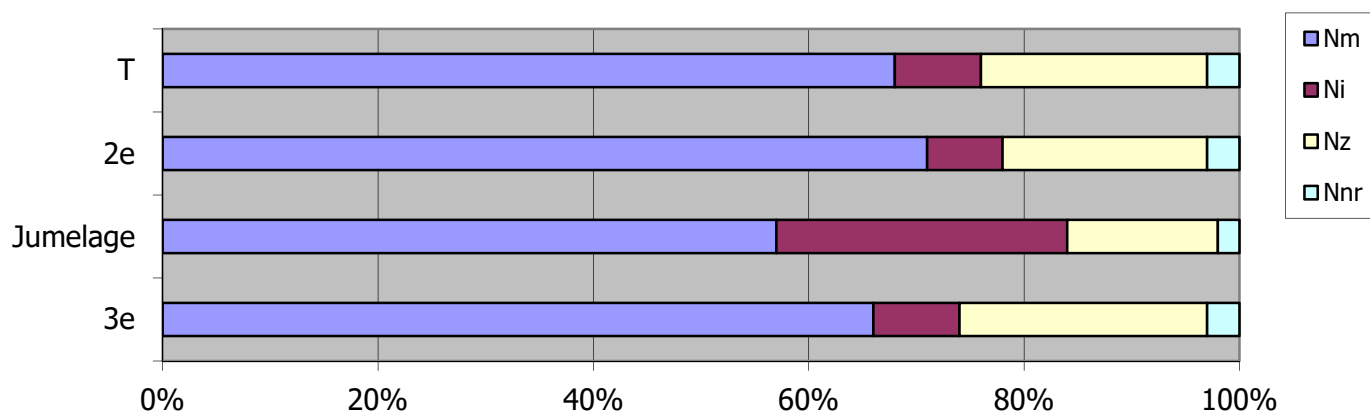
Exercice n. 4



EX 4 - Distribution des mo/M - toute population

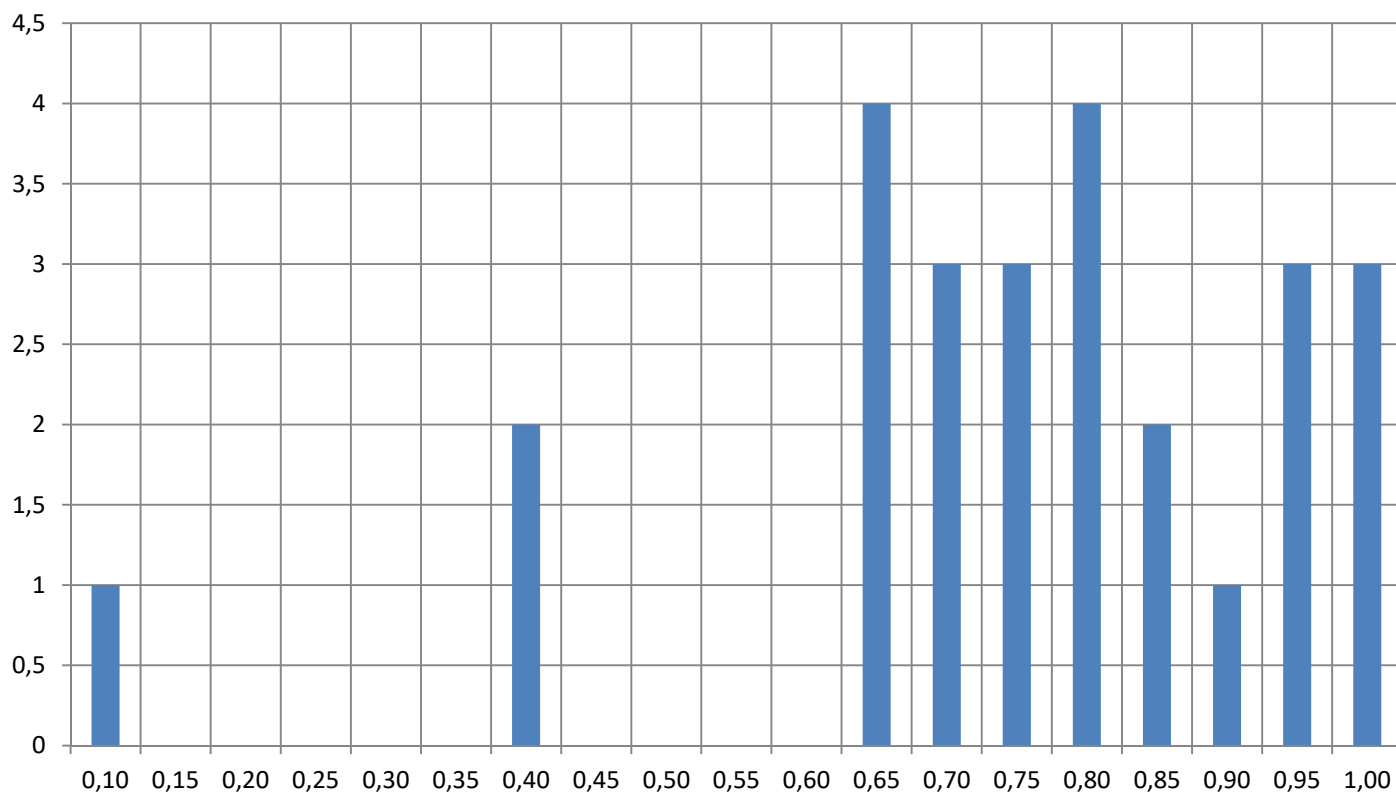


Exercice n. 6

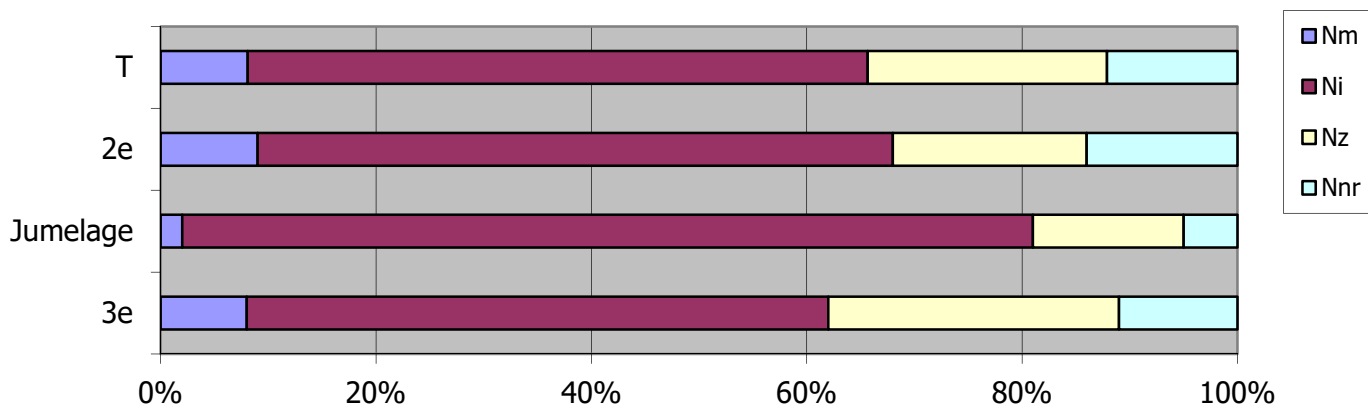


	3e	Jumelage	2e	T
Nm	66%	57%	71%	68%
Ni	8%	27%	7%	8%
Nz	23%	14%	19%	21%
Nnr	3%	2%	3%	3%

EX 6 - Distribution des mo/M - toute population

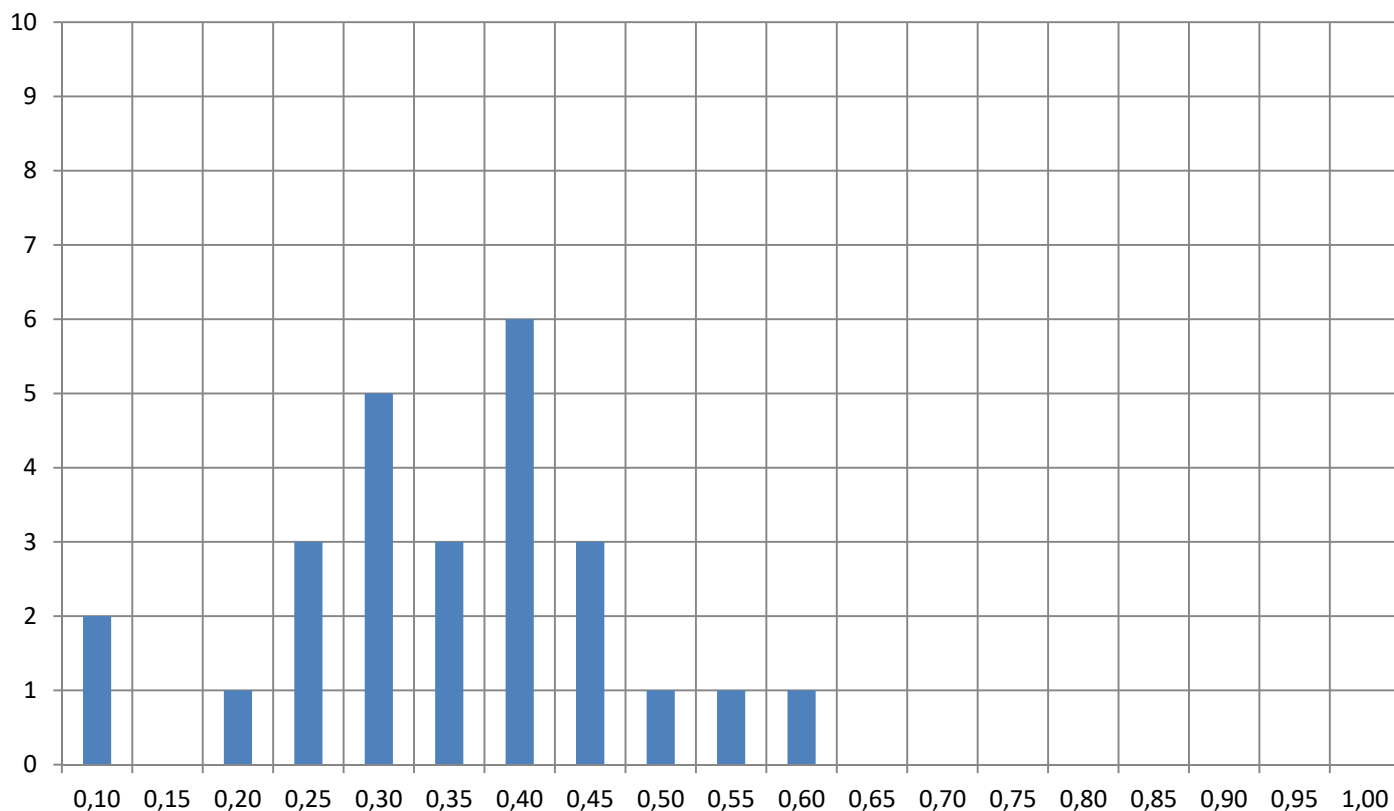


Exercice n. 10

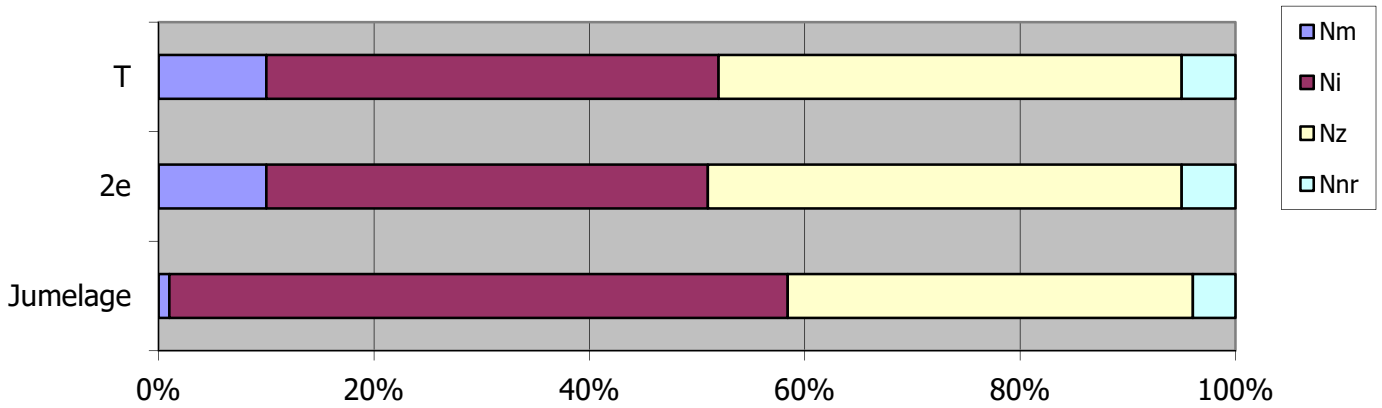


	3e	Jumelage	2e	T
Nm	8%	2%	9%	8%
Ni	54%	79%	59%	57%
Nz	27%	14%	18%	22%
Nnr	11%	5%	14%	12%

EX 10 - Distribution des mo/M - toute population



Exercice n. 12



	Jumelage	2e	T
Nm	1%	10%	10%
Ni	58%	41%	42%
Nz	38%	44%	43%
Nnr	4%	5%	5%

EX 12 - Distribution des mo/M - toute population

